

SPECIAL EVENTS & MEETINGS

at

Estelle Manor



Some occasions deserve something **S P E C I A L**,
and we've a selection of spaces *perfect* for private
events and meetings.



Estelle Manor

THE GROUNDS



WALKING DISTANCE FROM THE MANOR HOUSE

WALLED GARDEN	<i>4-minute walk</i>	HOLLYHOCK	<i>4-minute walk</i>
STABLES	<i>4-minute walk</i>	FALLOW HOUSE	<i>6-minute walk</i>
WOODLAND COTTAGES	<i>7-minute walk</i>	EYNHAM BATHS	<i>7-minute walk</i>
BLUEBELL HOUSE	<i>5-minute walk</i>	REDWOOD LODGE	<i>2-minute walk</i>
THE FARRIERS	<i>5-minute walk</i>	PICNIC VILLAGE	<i>4-minute walk</i>

AN OVERVIEW

THE MANOR HOUSE

The grand, original family home hosts the entrance hall, The Brasserie; an all-day dining space, The Billiards Room; a traditional Chinese restaurant, several areas to relax and bedrooms.

THE CLUBHOUSE

The members' hub of the manor, complete with a 250 sq m gym and class studio, a dedicated workspace to help inspire that next big idea and a kids' club including active, creative and quiet areas.

THE MUSE

A store containing a carefully curated selection of spoiling items for those who wish to take the Estelle Manor experience home.

PADEL

Get your padel fix with two courts located on the west side of the estate.

WALLED GARDEN

Walled Garden bedrooms are full of light with refined rural touches, with views across the serene garden.

4-minute walk from The Manor House

THE GLASSHOUSE

A lush greenhouse, filled with eclectic blooms, with a menu focused on shared, wood-fired dishes.

STABLES

Stable bedrooms are comfortable retreats, filled with hand-finished details and sweeping views over the southern gardens.

4-minute walk from The Manor House

WOODLAND COTTAGES

Ten bohemian-styled woodland cottages, dotted around the western grounds of the estate, perfect for families, or groups of friends.

7-minute walk from The Manor House

BLUEBELL HOUSE

A country haven, our six-bedroom house is the largest on the estate.

5-minute walk from The Manor House

THE FARRIERS

A spacious and airy five-bedroom house, designed with families in mind.

5-minute walk from The Manor House

HOLLYHOCK

Ideal for groups of friends, Hollyhock is a warm and comforting space with three bedrooms.

5-minute walk from The Manor House

FALLOW HOUSE

The ideal location for larger event groups, Fallow House is complete with three meeting areas, including an intimate private dining room, and a grand room for up to 100 guests.

6-minute walk from The Manor House

EYNSHAM BATHS

A place of ritual and indulgence, the Roman-inspired 3,000 sq m spa encompasses a vast tepidarium bathing hall, five pools, a tea lounge, ten treatment rooms; including couples' suites and thermal cabins, and an open-air hideaway and bar.

7-minute walk from The Manor House

THE SHALA

The Shala, which is Sanskrit for home, is our 220 sq m holistic studio located in Eynsham Baths. A space to come back to yourself, the studio hosts everything from chanting to wellbeing talks and movement classes, such as Yoga and gong baths to name a few...

WOODLAND LOOP

Our 1km Woodland Loop is perfect for a relaxing walk or a reinvigorating run. Take strides surrounded by heritage oaks and great sequoias.

ADVENTURE PADDOCK

Our 25-acre paddock has Cotswold Lion sheep and ponies, four aviaries for birds of prey experiences, tree climbing - including a low ropes course and zip wire, a bushcraft area, plus sheltered archery, air rifle and axe throwing sessions!

REDWOOD LODGE - SEASONAL


Enjoy drinks, sports and all-day dining at our rustic lodge. With outside tables dotted around the firepit, dishes are served off the pit master - think asado slow cooked meats and vegetables with delicious salads.

2-minute walk from The Manor House

PICNIC VILLAGE - SEASONAL

Our elegant picnic area is the ideal alfresco spot. Alongside an indulgent hamper we'll provide crockery, blankets and cushions on the lawn, or be served family-style, seated under our canvas. Join us for spontaneous aperitivo sun downers and snacks as the sun sets over the manor.

4-minute walk from The Manor House



Our rooms range in size from 16 square metres to 317 square metres and can accommodate between 10 and 80 people. Food and drinks menus – ranging from cocktails and snacks to sumptuous four-course dinners – can be created by our team.

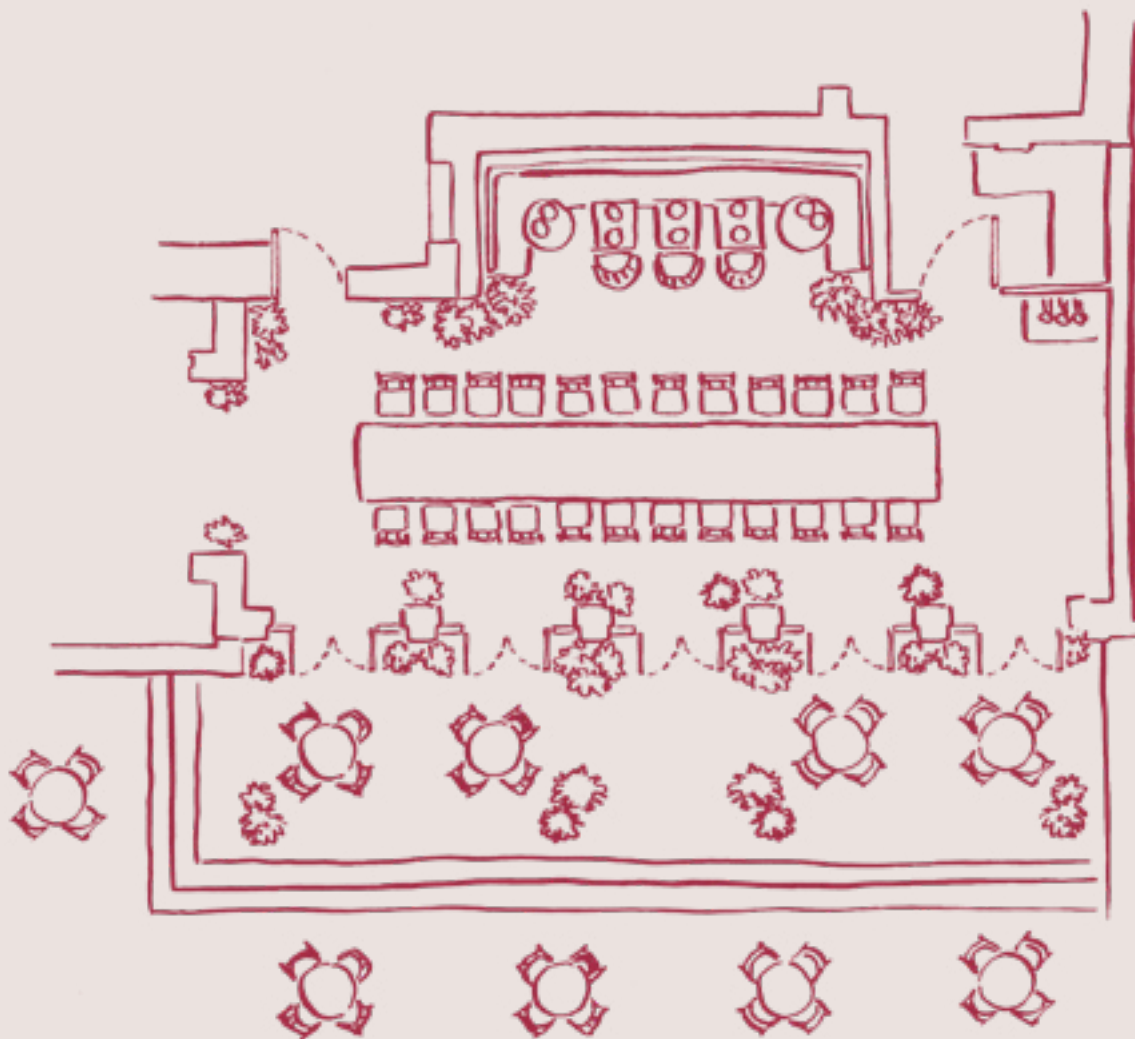
THE ORANGERY

50 sq m

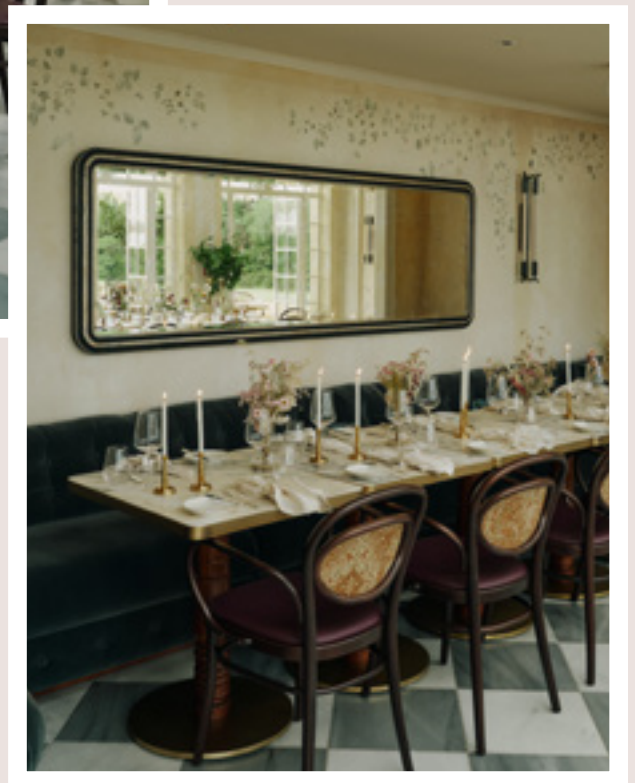
| 538sq ft

| 30pax seated dinner

Situated in the Manor House, the stunning Orangery has south-facing views over the grounds. Hand-painted motifs are scattered across the walls and bleached original wood panelling creates a fresh and refined feel.



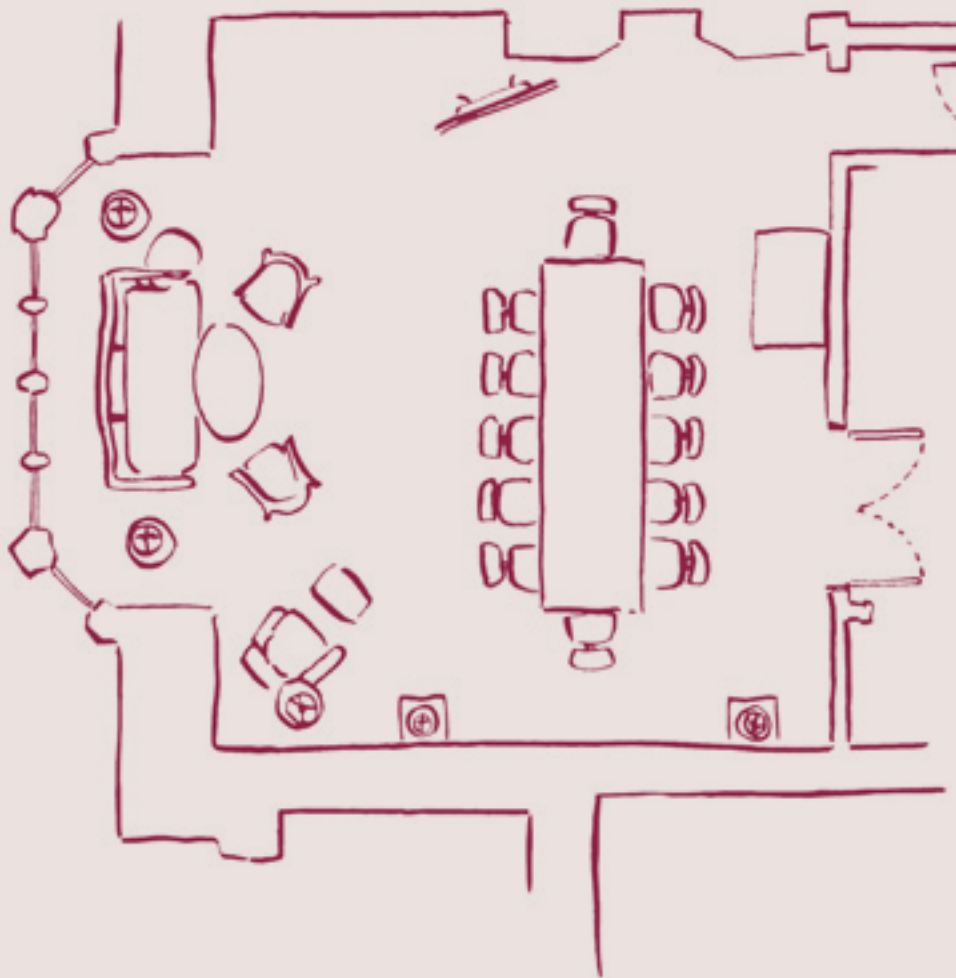
THE ORANGERY



MANOR BOARDROOM

46 sq m | 495 sq ft | 12pax Boardroom

The Manor Boardroom is a light-filled, comfortable space, with a club-like feel. Featuring wood panelling, an original marble fireplace and stunning views across the estate.



MANOR BOARDROOM

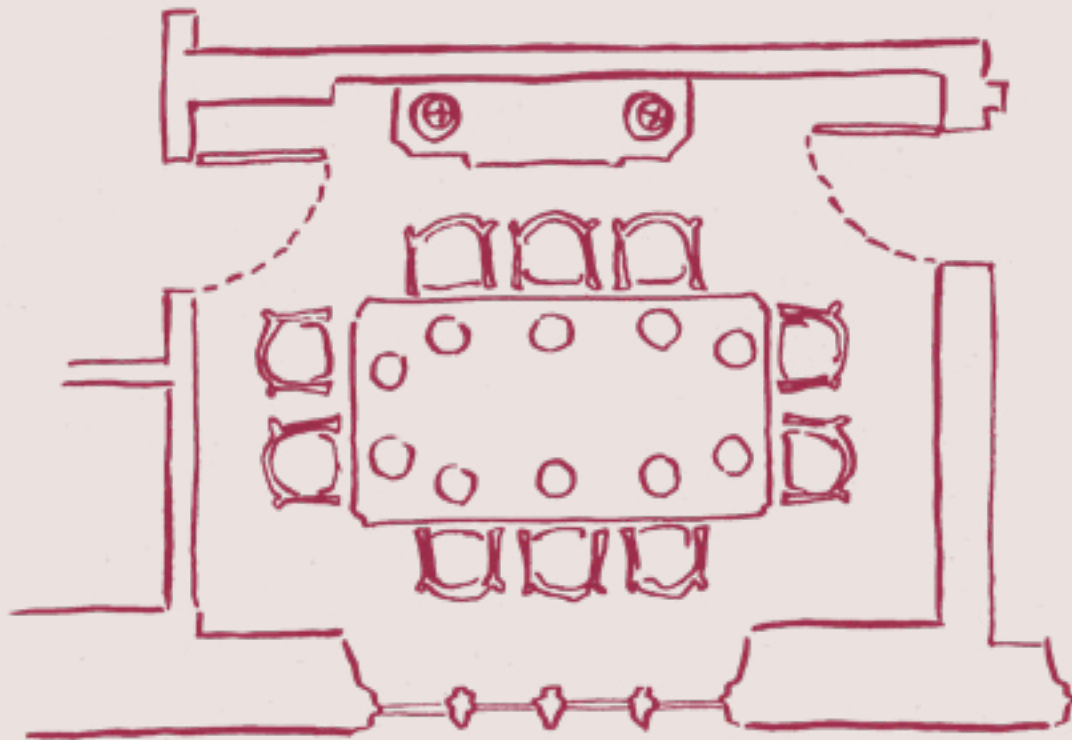


Estelle Manor

THE BILLIARDS PRIVATE DINING ROOM

16 sq m | 172 sq ft | 10pax

Our private dining space adjacent to The Billiards Room is intimate in feel, ideal for indulging in the restaurant's traditional Chinese feasting menu, adorned with a Malachite-inspired wallpaper and soft lighting to set an elegant tone.



THE BILLIARDS
PRIVATE DINING ROOM



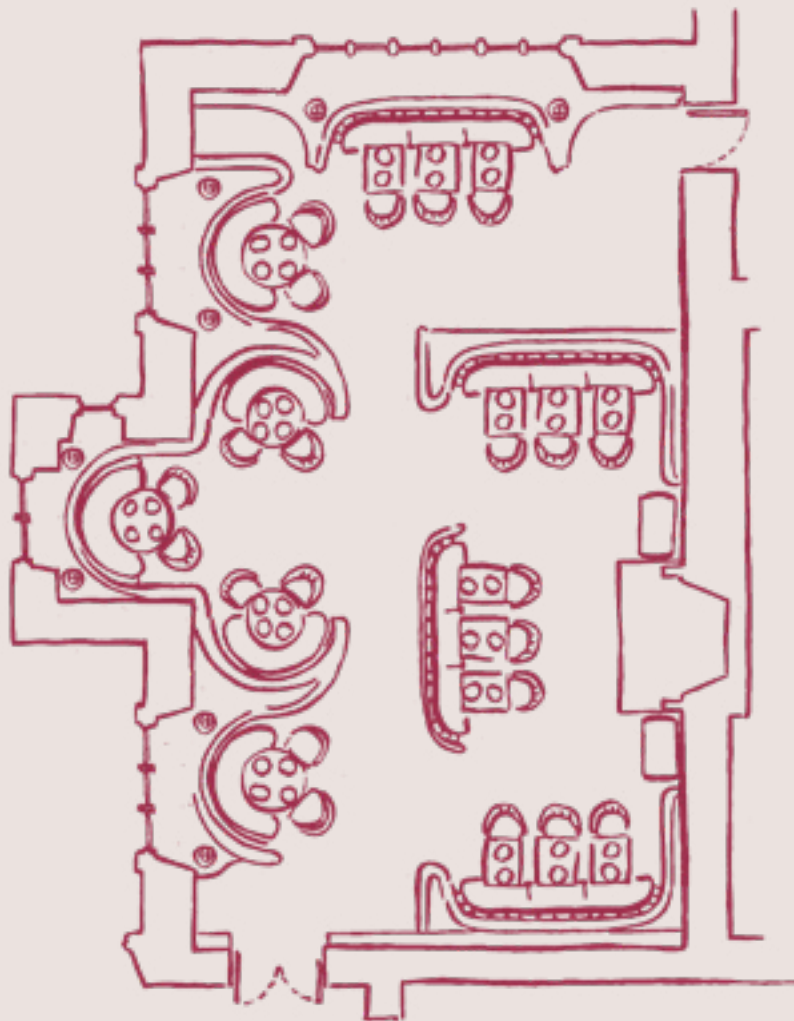
THE BILLIARDS ROOM

98 sq m

| 1055 sq ft

| 44pax seated dinner

The striking Billiards Room has limed plaster walls and serpent-shaped velvet banquettes in shades of Malachite green. Offering a menu of traditional Chinese dishes, The Billiards Room focuses on dim sum, roasted meats and fish. Highlights include roast whole duck, chilli lobster and char siu pork belly bao.



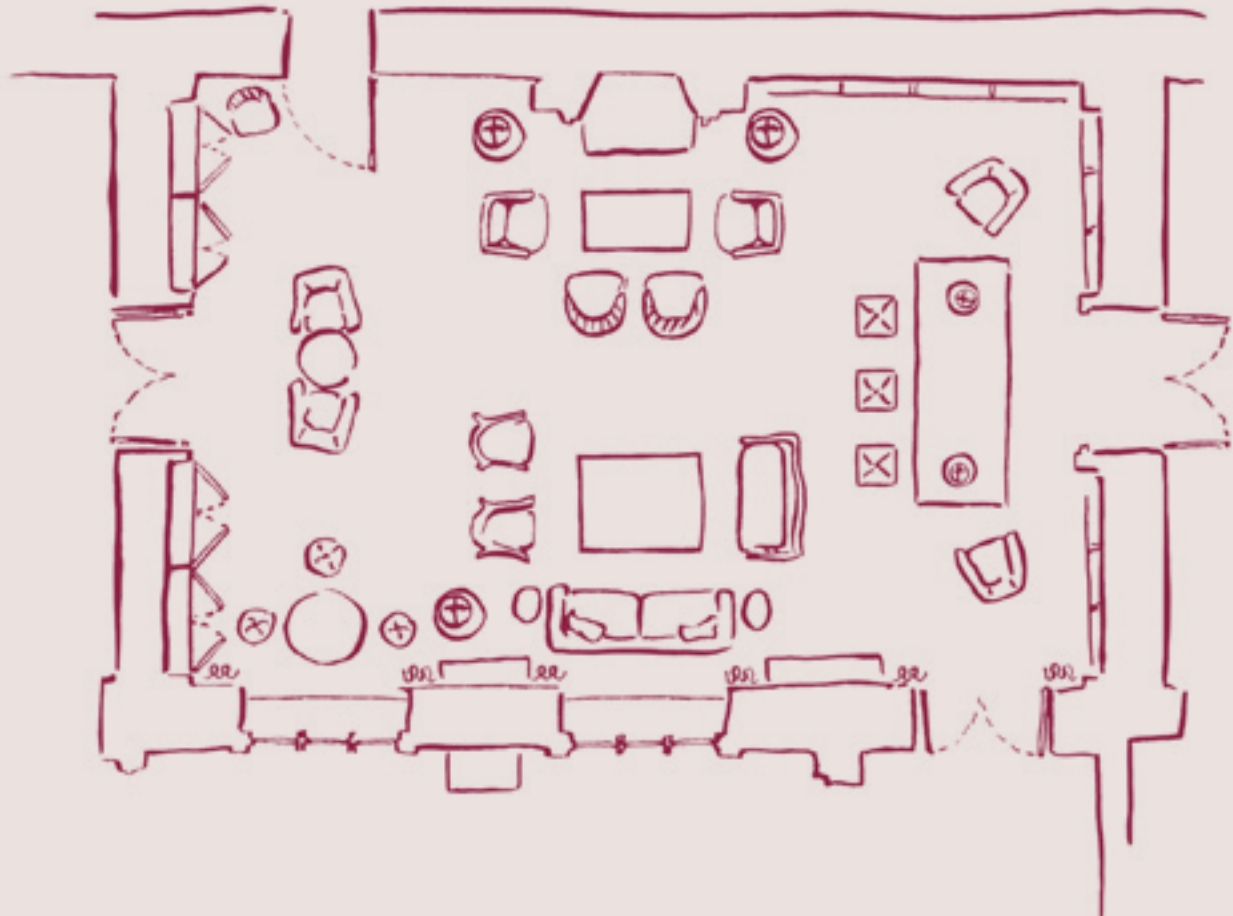
THE BILLIARDS ROOM



THE LIBRARY

46 sq m | 495 sq ft | 50pax standing reception

The house's original library sits opposite the Living Room. A place to pause for a moment of calm, rows of shelves host books, curiosities and keepsakes.



THE LIBRARY



THE POTTING SHED

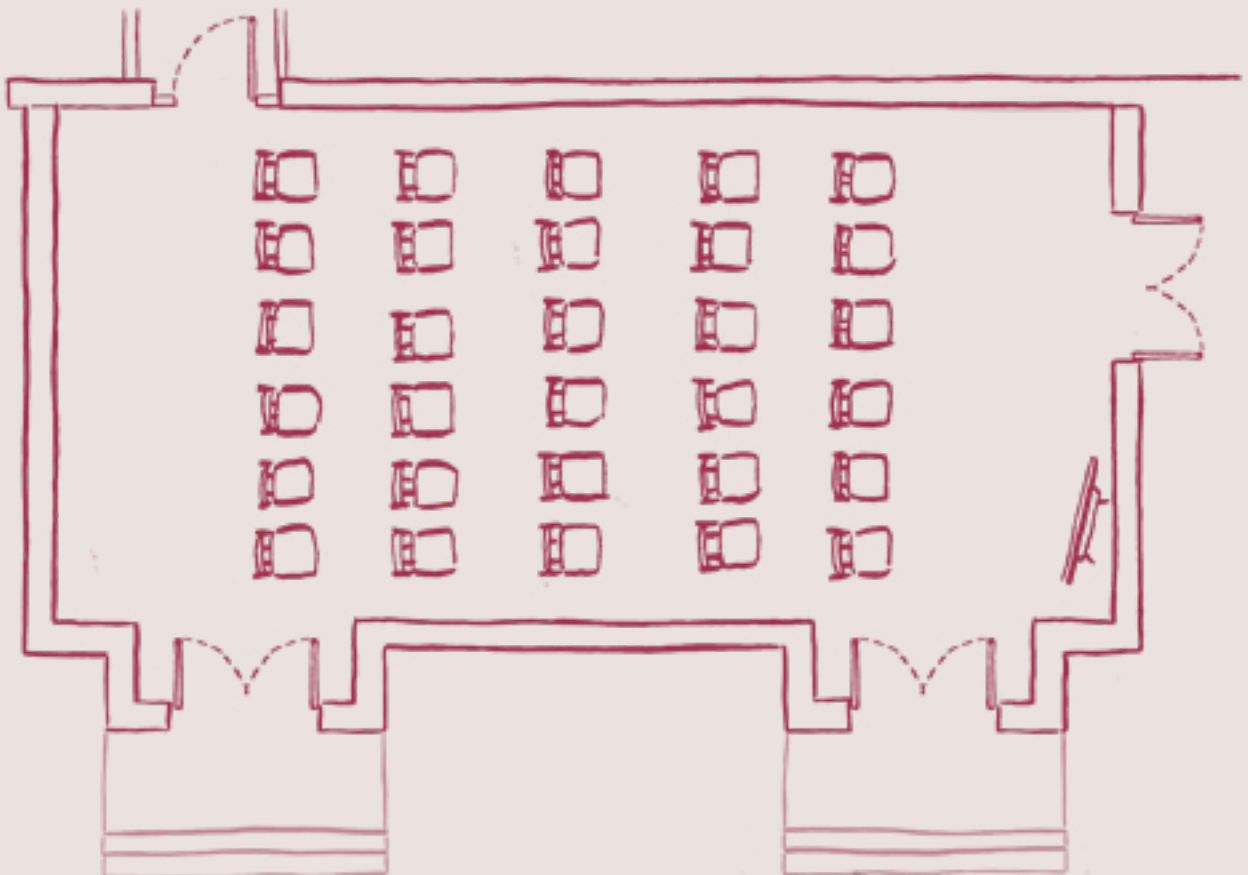
79 sq m

| 850 sq ft

| 30pax theatre style

| 24pax Boardroom

A stone's throw from The Glasshouse, with views across our beautiful production garden, The Potting Shed is a versatile space that allows for several different event set-ups. Whether it's theatre style or a breakout space, feel close to nature in this light-filled greenhouse.



THE POTTING SHED

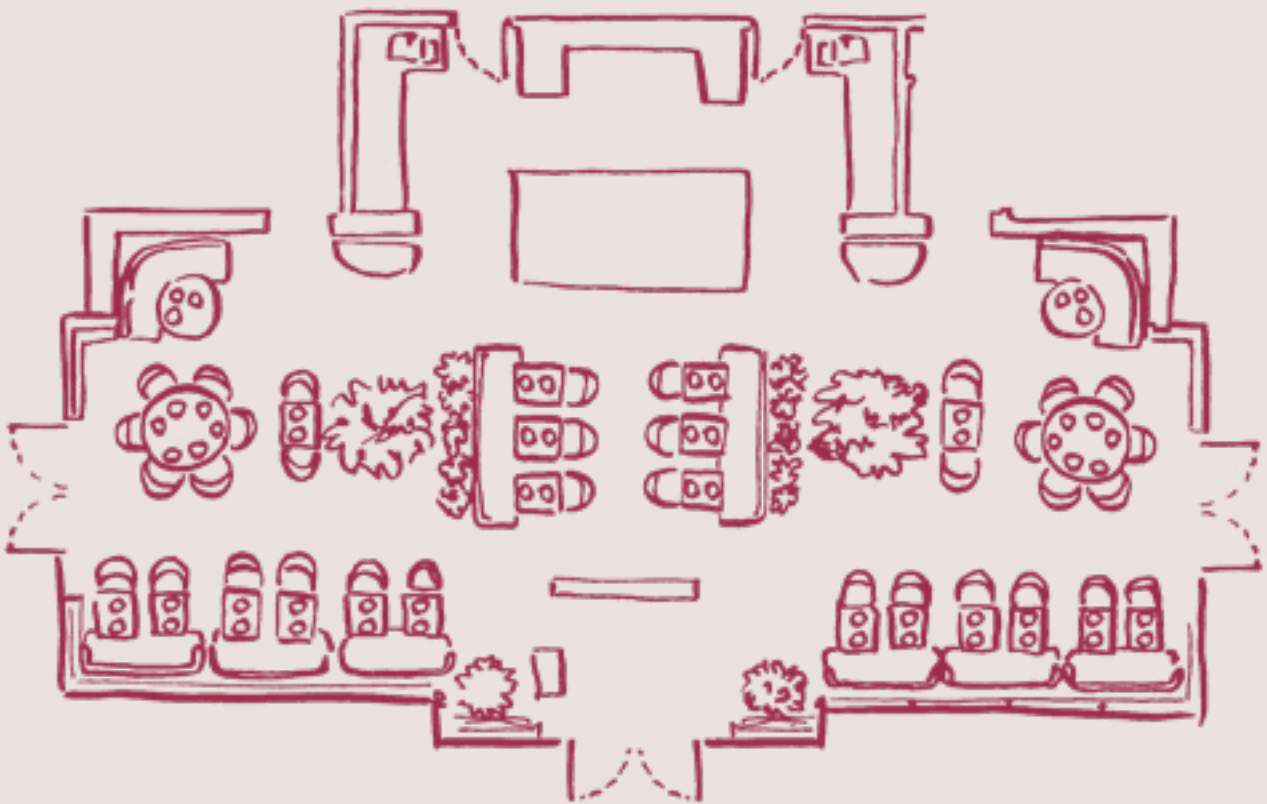


Estelle Manor

THE GLASSHOUSE

122 sq m | 1313 sq ft | 70pax existing layout | 40pax long table

Surrounded by a walled garden, offering a natural source of heritage fruit and veg, The Glasshouse restaurant is a lush greenhouse. Filled with eclectic blooms and lanterns hanging overhead, the all-day working kitchen has an open fire and an oversized, reclaimed-marble island.



THE GLASSHOUSE

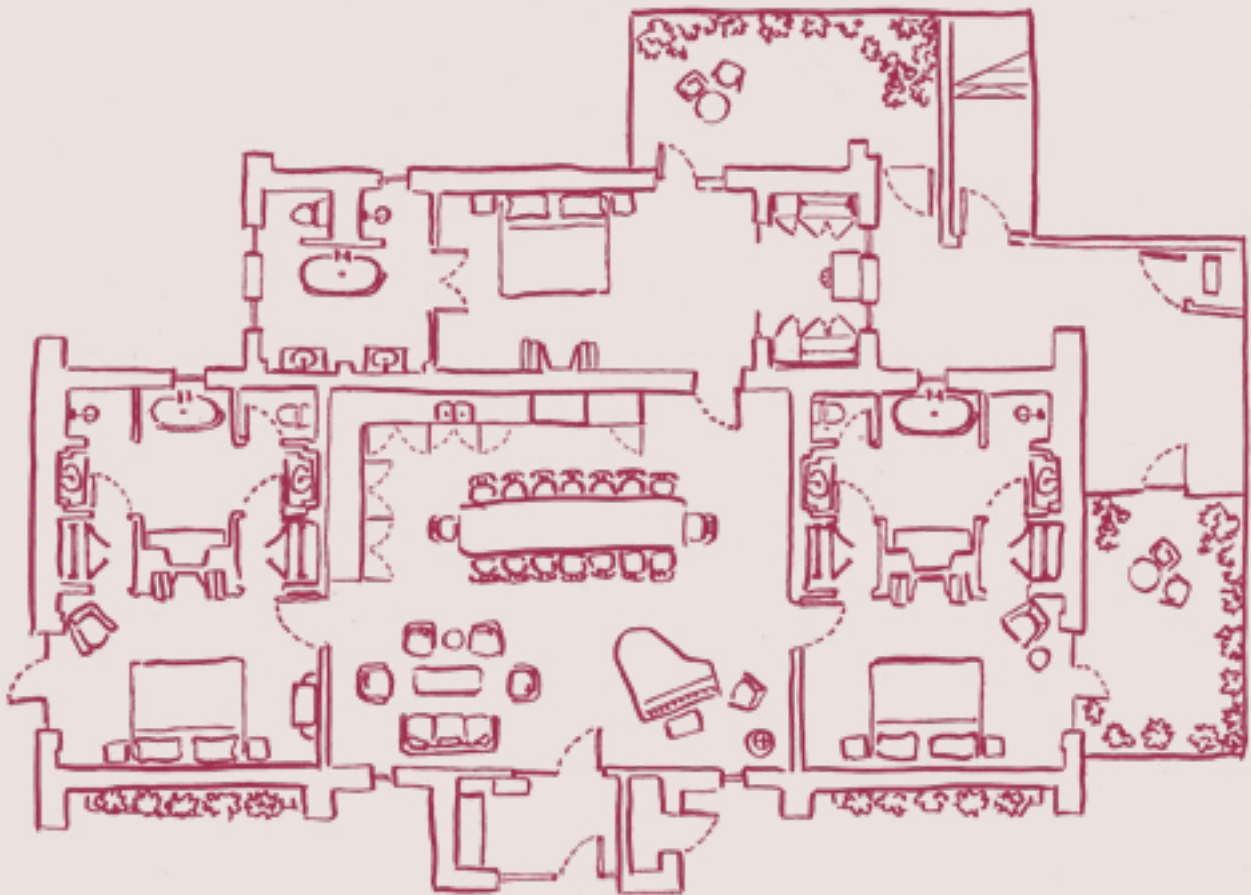


HOLLYHOCK

273 sq m | 2938 sq ft | 16pax Boardroom

Nestled deep in our woodland, Hollyhock is a warm and comforting space with some unexpected decadent moments. A vaulted great room comes complete with a bar and grand piano, an elegant spot for hosting guests.

The perfect base for meetings, an intimate soiree, or a ‘chef at home’ private dinner. Including a full kitchen set-up and three breakout spaces, alongside a private outdoor terrace.



HOLLYHOCK



Estelle Manor

FALLOW HOUSE

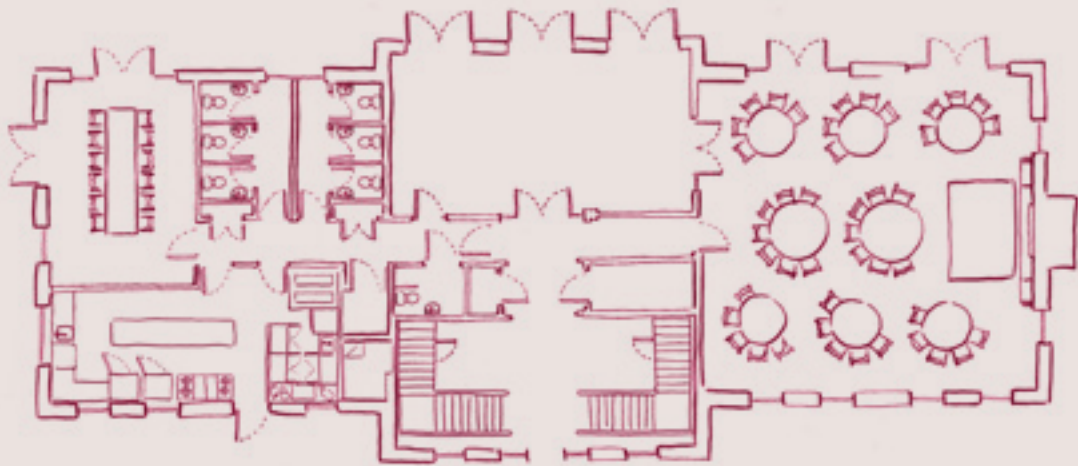
540 sq m

| 5812 sq ft

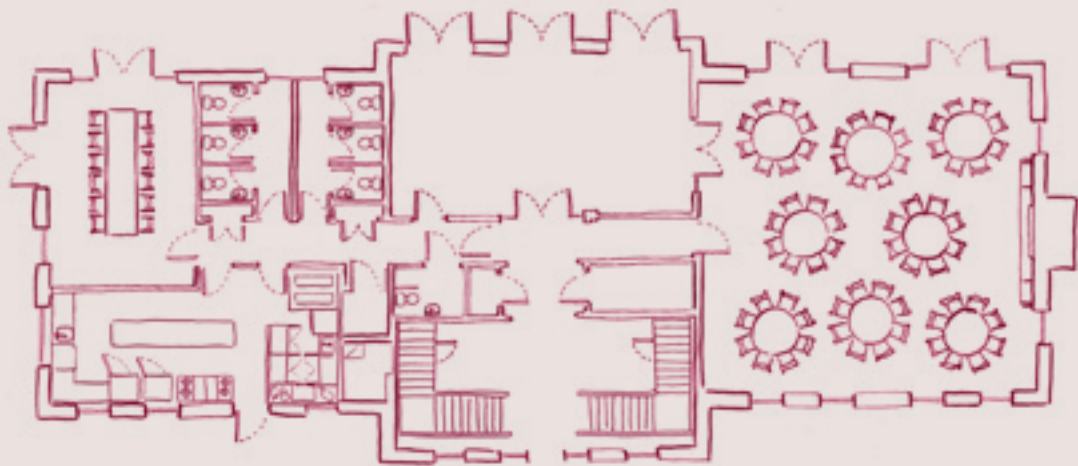
| 100pax standing

| Opening in February 2025

Coming soon to the grounds of Estelle Manor, Fallow House will be the ideal location for larger event groups. Complete with three meeting areas, including an intimate private dining room, the grand room will seat up to 60 guests at round tables, 70 guests 'theatre style' and up to 100 for a standing cocktail reception. Expect a sophisticated space with refined design.

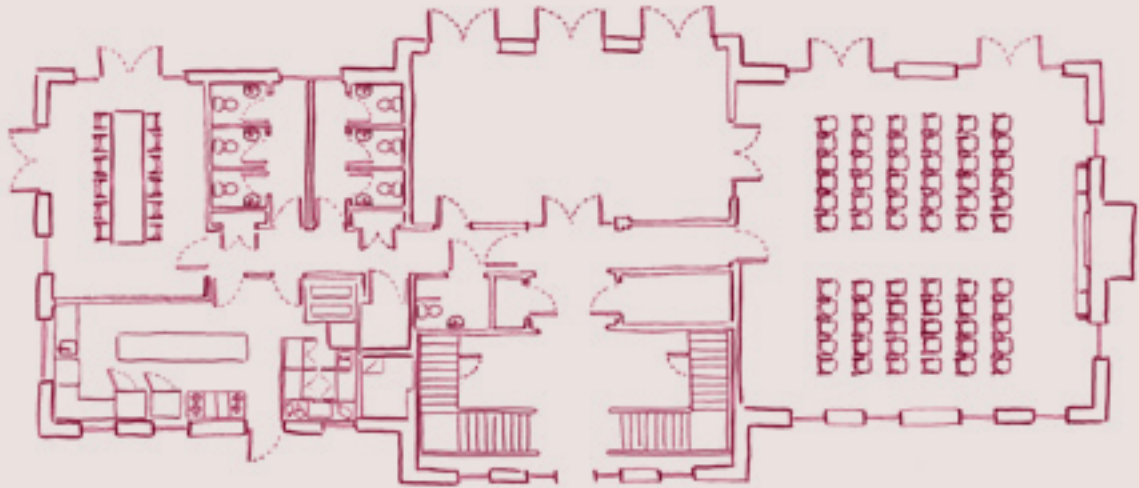


Ground Floor - Cabaret

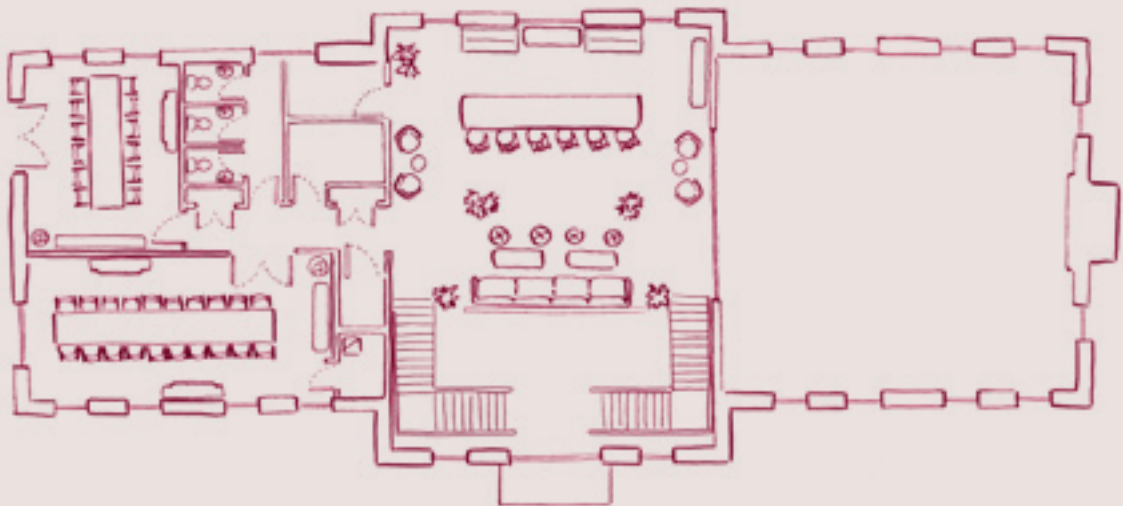


Ground Floor - Banquet

FALLOW HOUSE



Ground Floor - Theatre



First Floor

FALLOW HOUSE



Estelle Manor

Estelle Manor