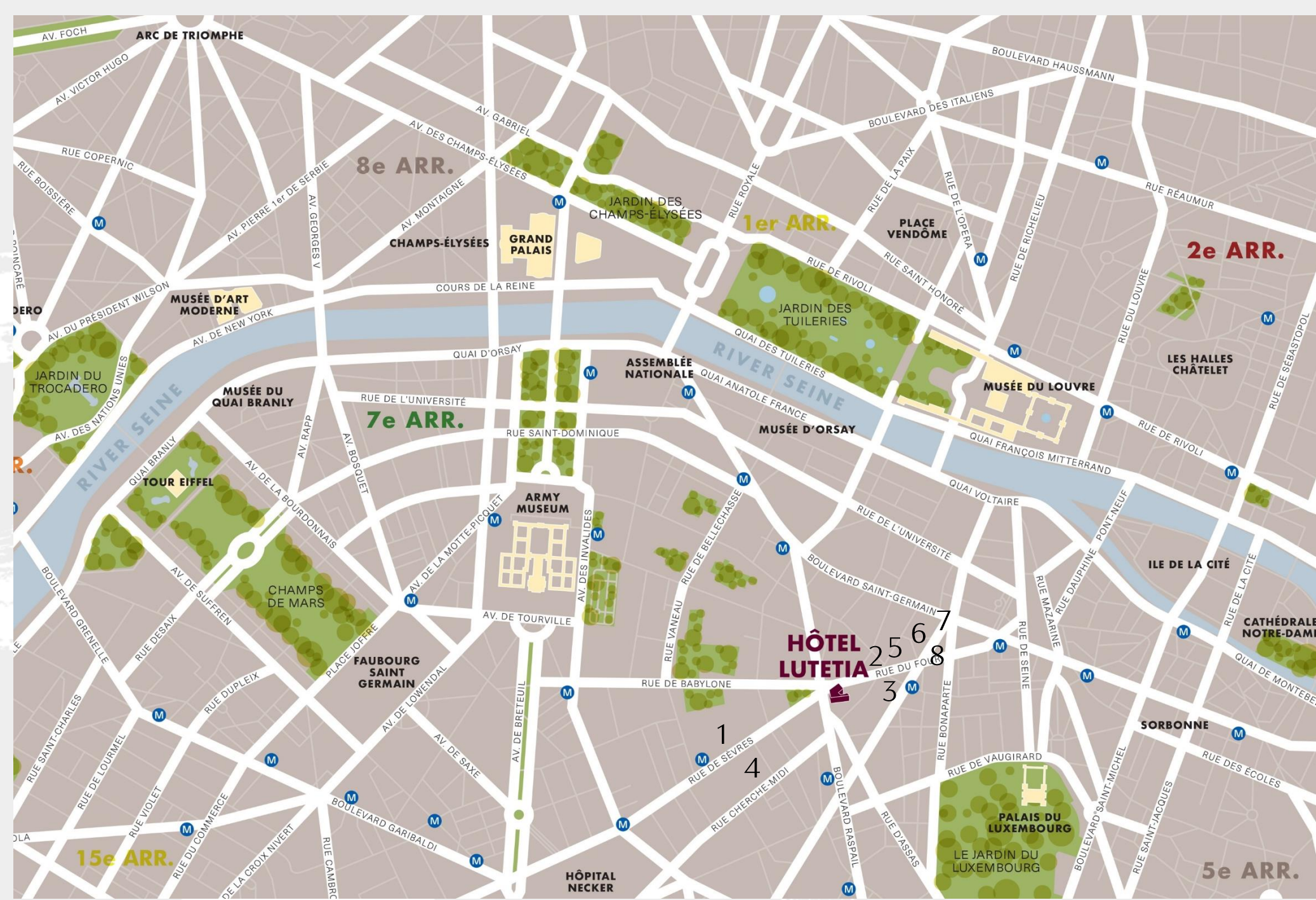


# LVTETIA

PARIS





OUTSTANDING LOCATION  
 THE LUTETIA DELIVERS AN AUTHENTIC PARISIAN EXPERIENCE AND HAS BEEN AT THE HEART OF SAINT GERMAIN AND THE LOCAL COMMUNITY FOR MORE THAN 100 YEARS.

- 1  **LE BON MARCHÉ**  
RIVE GAUCHE
- 2 **Berluti**
- 3  **HERMÈS PARIS**
- 4 **GUERLAIN**
- 5 **CELINE**
- 6 **SAINT LAURENT PARIS**
- 7  **LOUIS VUITTON**
- 8  **ROLEX**



COUTYARD ROOM



SUPERIOR ROOM



GRAND SUPERIOR ROOM



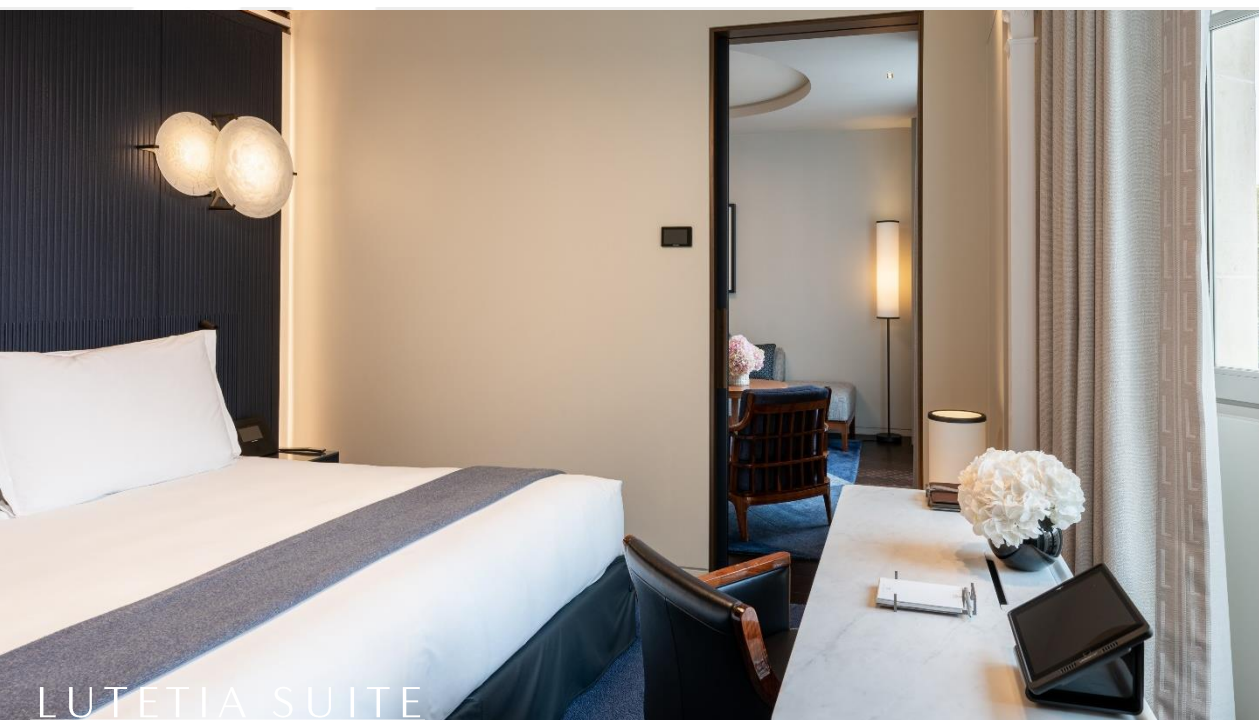
DELUXE ROOM WITH BALCONY



EIFFEL DELUXE ROOM WITH BALCONY



JUNIOR SUITE



LUTETIA SUITE



DELUXE SUITE



SUITE LATELIER



SUITE AMOUR



SUITE LITTÉRAIRE



JOSÉPHINE BAKER SUITE



APPARTEMENT SAINT-GERMAIN BY COPPOLA



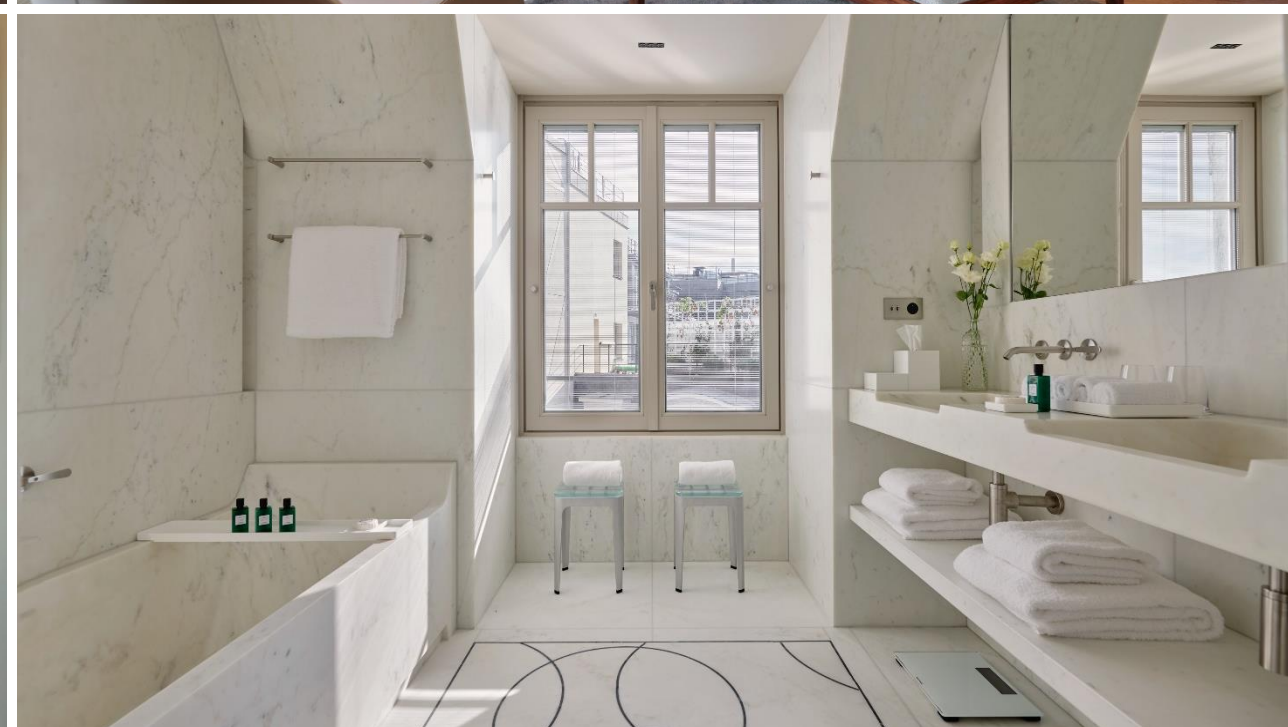
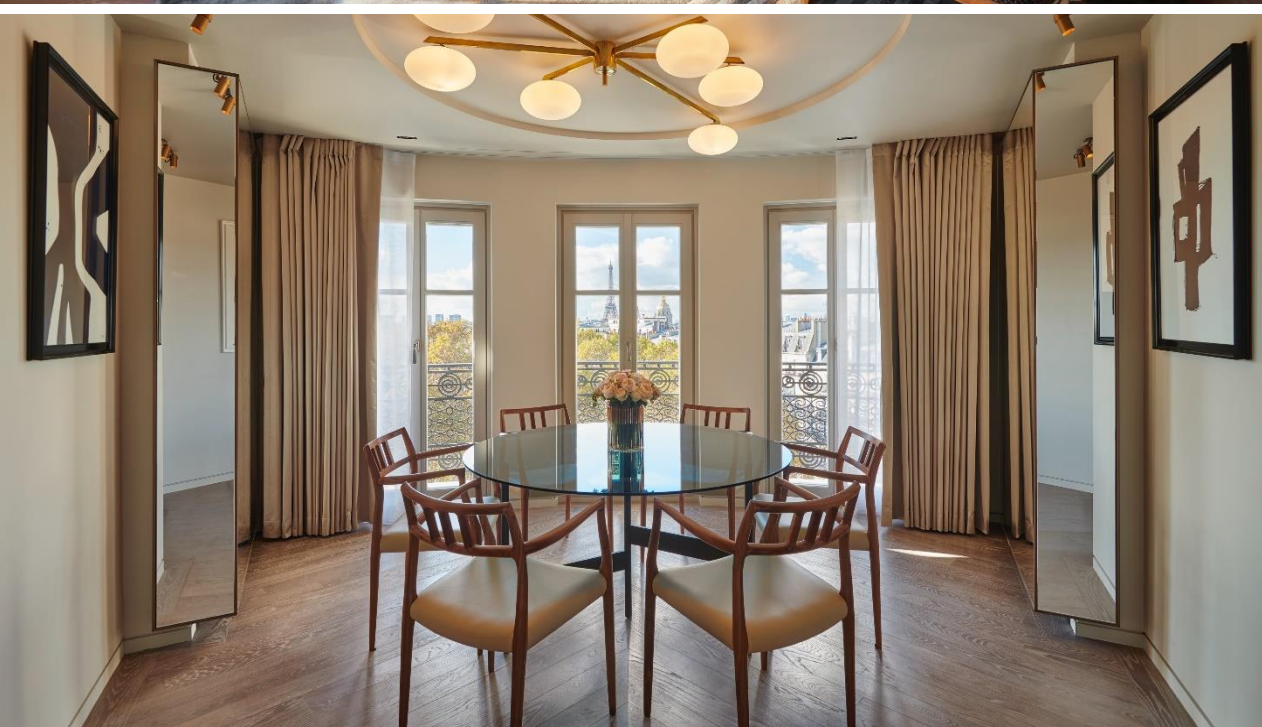
APPARTEMENT EIFFEL



APPARTEMENT SAINT-GERMAIN BY COPPOLA



APPARTEMENT EIFFEL



# LVTETIA

PARIS





## CRISTAL BALLROOM

The historic Cristal Ballroom is the largest event space at Lutetia Paris. Faithfully restored to its original décor, with its large windows, vintage crystal chandeliers; it is the perfect venue for parties, meetings, fashion shows, weddings and celebrations.

It has integrated cutting edge technology with video projector and full AV system. The Cristal Ballroom has its own private reception area and its own entrance on Boulevard Raspail.

**USABLE AREA: 310 SQM / 3,337 SQ.FT**  
**HEIGHT: 5,45 M / 17,88 FT**

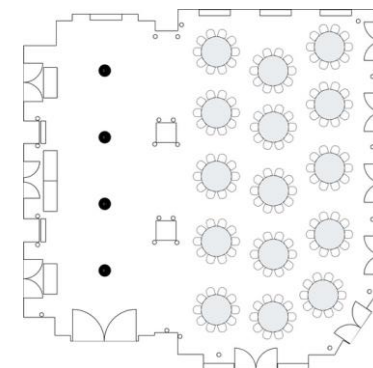
### Configurations and capacity

- Cocktail: 260 persons
- Banqueting: 190 persons
- Boardroom: 42 persons
- Theatre style: 180 persons
- Cabaret style: 84 persons
- U-shape: 60 persons
- Classroom style: 84 persons

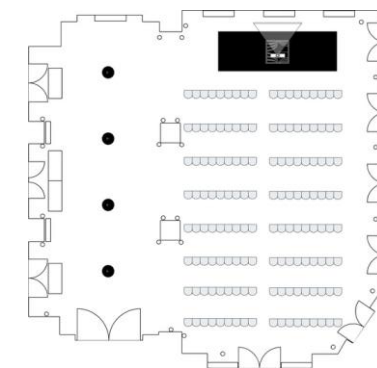
### Key features

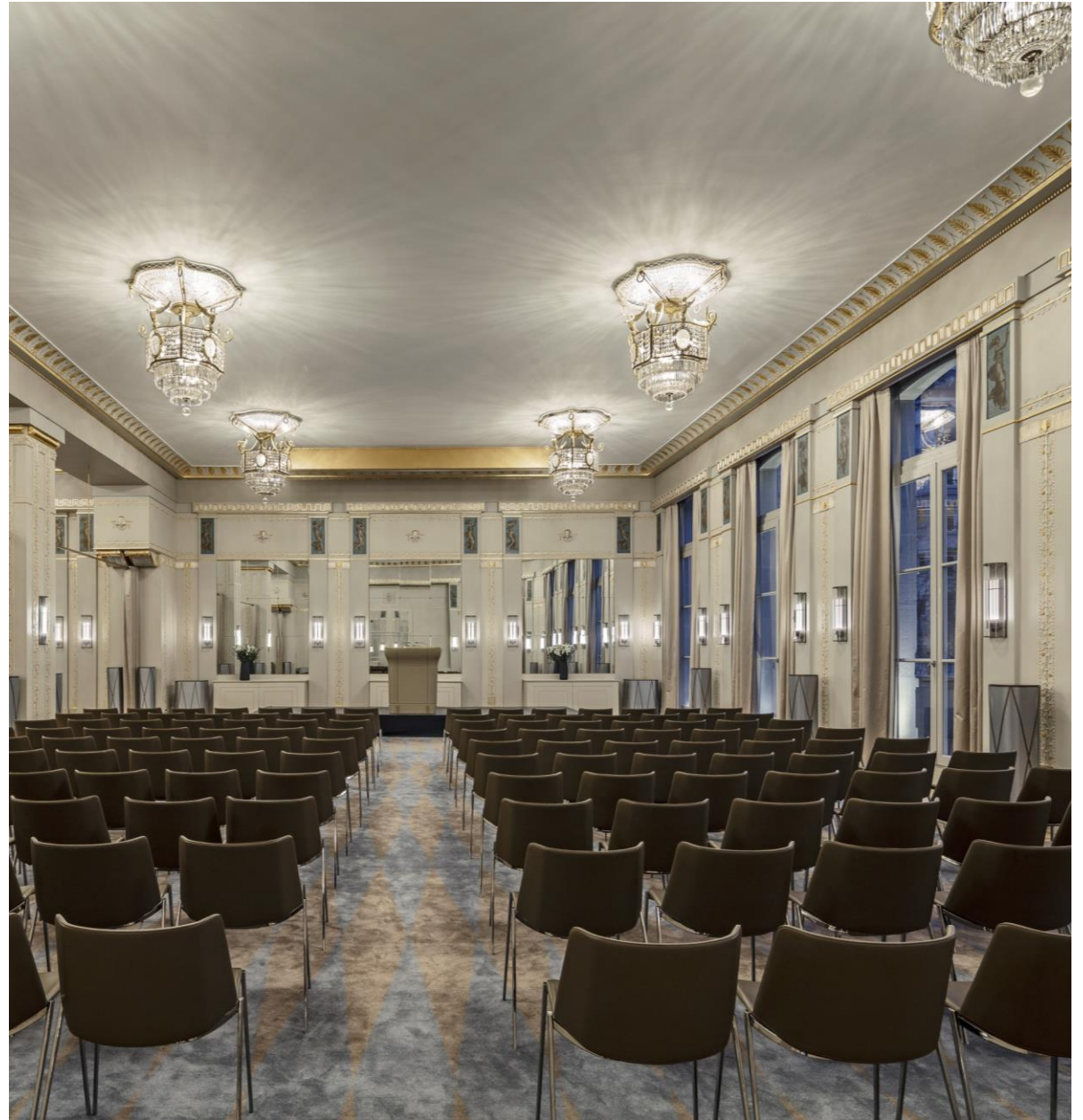
- Historic ballroom
- Lalique style chandeliers
- Natural light with 5 large windows
- Beautiful high ceilings (5.45 m)
- High spec av system: video projector, screen, sound system
- Dedicated reception area
- Private access at 47 boulevard Raspail

BANQUETING



THEATER STYLE





# L'ORANGERIE

L' Orangerie is a private dining and events space in the heart of Lutetia Paris, with large windows and an access to the open-air patio. This abundant space is decorated with original paintings by Léon Voguet and can accommodate up to 170 people. It is the perfect venue for cocktail receptions, banqueting, or even a boardroom set up.

A marble buffet area with integrated cooking station allows you to organize live cooking sessions with our Chefs.

**USABLE AREA: 152 SQM / 1,636 SQ.FT**  
**HEIGHT: 4 M / 13,12 FT**

## CONFIGURATIONS AND CAPACITY

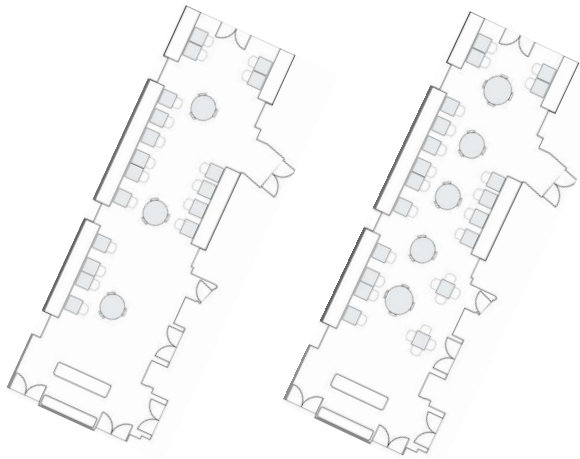
### Key features

- Natural light with bay windows and glass roof
- Semi-private access
- Sleek contemporary design by Jean-Michel Wilmotte
- Area with marble buffet and kitchen station for live cooking entertainment

- Cocktail: 160 persons
- Banqueting: 80 persons
- Boardroom: 30 persons

### COCKTAIL

### BANQUETING





# SALON SORBONNE

Salon Sorbonne is a discreet and comfortable events space bathed in natural light with contemporary décor. This venue is perfect for mid-size banqueting, reception or classroom set-ups.

The space has an integrated cutting-edge AV system and a dedicated private access at 47 boulevard Raspail.

**USABLE AREA: 51 SQM / 544 SQ.FT**  
**HEIGHT: 3,5 M / 11,248 FT**

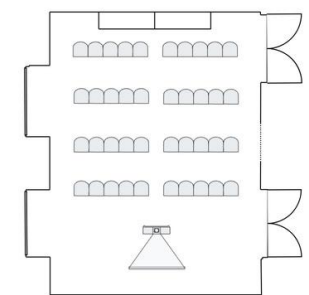
### Configurations and capacity

- Cocktail: 40 persons
- Banqueting: 40 persons
- Boardroom: 24 persons
- Theater: 40 persons
- Cabaret: 21 persons
- U Shape : 18 persons
- Classroom : 21 persons

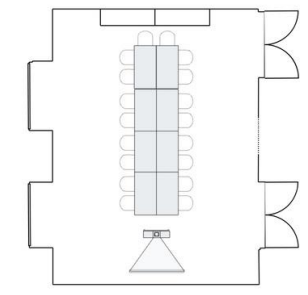
### Key features

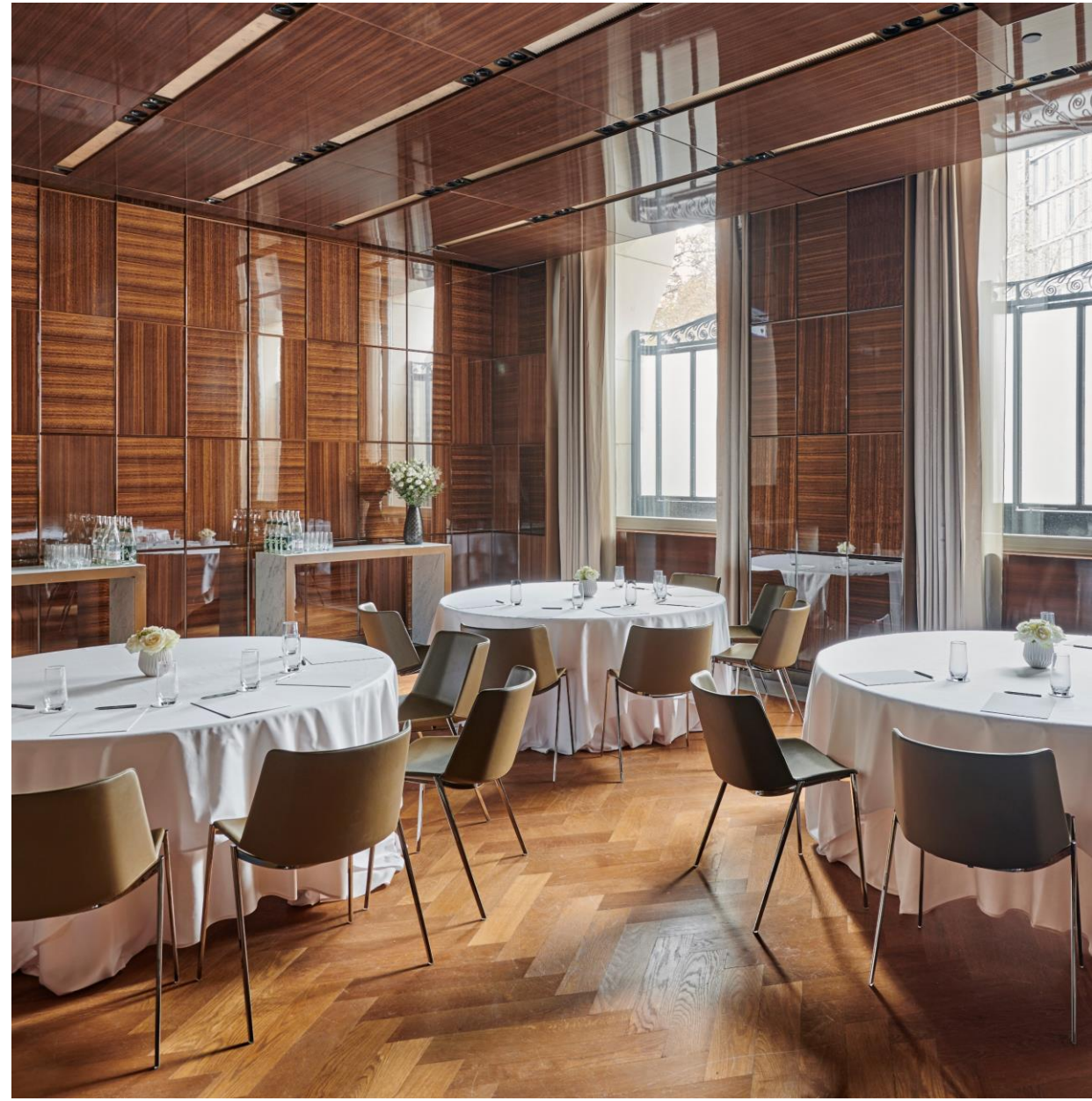
- Natural light
- Flexible layout
- Contemporary design with varnished eucalyptus wood and parquet flooring
- Full AV suite: video projector, screen and sound system
- Conference chairs designed by Jean-Michel Wilmotte
- Private access at 47 boulevard Raspail

THEATER STYLE



BOARDROOM





# SALON BEAUX-ARTS

With its contemporary design, Beaux-Arts is the perfect sized room for intimate gatherings or moderately sized meetings and events.

The space has an integrated cutting-edge AV system, and a dedicated private access at 47 boulevard Raspail.

USABLE AREA: 48 SQM / 517 SQ.FT

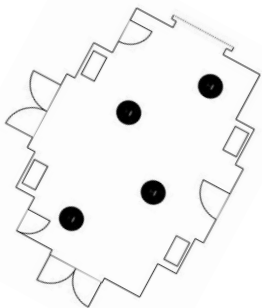
HEIGHT: 3,5 M / 11,1248 FT

## Configurations and capacity

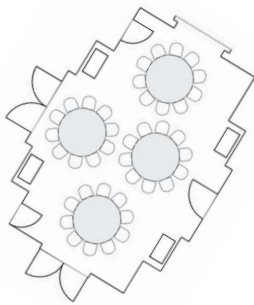
## Key features

- Cocktail: 40 persons
  - Banqueting: 40 persons
  - Boardroom: 24 persons
  - Theater : 40 persons
  - Cabaret : 21 persons
  - U Shape : 18 persons
  - Classroom : 21 persons
- Contemporary design with varnished eucalyptus wood and parquet flooring
  - Full AV suite: video projector, screen and sound system
  - Conference chairs designed by Jean-Michel Wilmotte
  - Private access at 47 boulevard Raspail

COCKTAIL



BANQUETING





## SALON SEVRES

This elegant conference room is ideal for intimate events and meetings. It enjoys a bird's-eye view of the Bar Joséphine and natural daylight.

Its magnificent marble table is ideal for board meetings and business lunches or dinners.

USABLE AREA: 44 SQM / 471 SQ.FT  
HEIGHT: 2,3 M / 7,64 FT

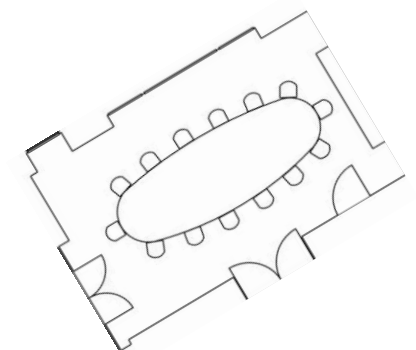
### CONFIGURATIONS AND CAPACITY

- Boardroom: 20 persons

### KEY FEATURES

- Natural light
- Overlooking the Bar Joséphine
- Contemporary design with varnished eucalyptus wood and parquet flooring
- Full AV suite: video projector, screen and sound system
- Marble table with integrated meeting equipment
- Leather armchairs designed by Jean-Michel Wilmotte

BOARDROOM



# SALON BOUCICAUT

An intimate venue with a large bay window overlooking Boulevard Raspail and Square Boucicaut, it's ideal for small meetings or private dinners.

Furnished with a magnificent marble table, the room is also decorated with varnished eucalyptus wood for a warm, elegant ambience.

USABLE AREA: 25 SQM / 471 SQ.FT

HEIGHT: 2,6 M / 7,64 FT

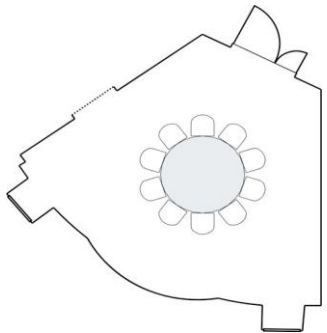
## CONFIGURATIONS AND CAPACITY

- Banqueting: 10 persons

## KEY FEATURES

- Natural light
- Large bay window overlooking boulevard Raspail and square Boucicaut
- Contemporary design with varnished eucalyptus wood and parquet flooring
- Marble table with integrated meeting equipment
- Leather armchairs designed by Jean-Michel Wilmotte

## BANQUETING





## THE MEZZANINE

The Mezzanine and its patio are the ideal private spaces for lunches, dinners and events. They are located on the second floor of Brasserie Lutetia.

The restaurant has a warm and typical Parisian ambience, and its Mezzanine offers a panoramic view on the vibrant Saint-Germain-des-Prés neighborhood, as well as a dedicated outdoor patio.

### USABLE AREA:

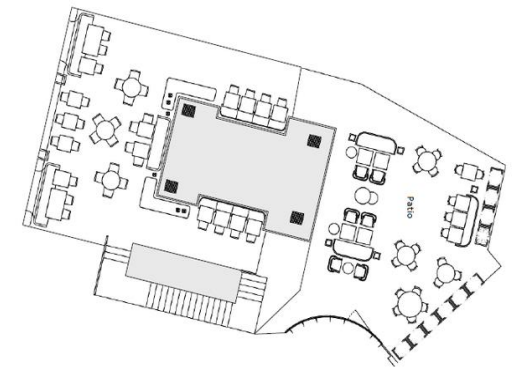
- MEZZANINE: 94 SQM / 1011,8 SQ.FT
- PATIO : 88 SQM / 947,224 SQ.FT
- HEIGHT: 2,6 M / 7,64 FT

### CONFIGURATIONS AND CAPACITY







- Cocktail : 80 persons
- Banqueting: 50 persons
- Capacity patio : 40 persons

### KEY FEATURES

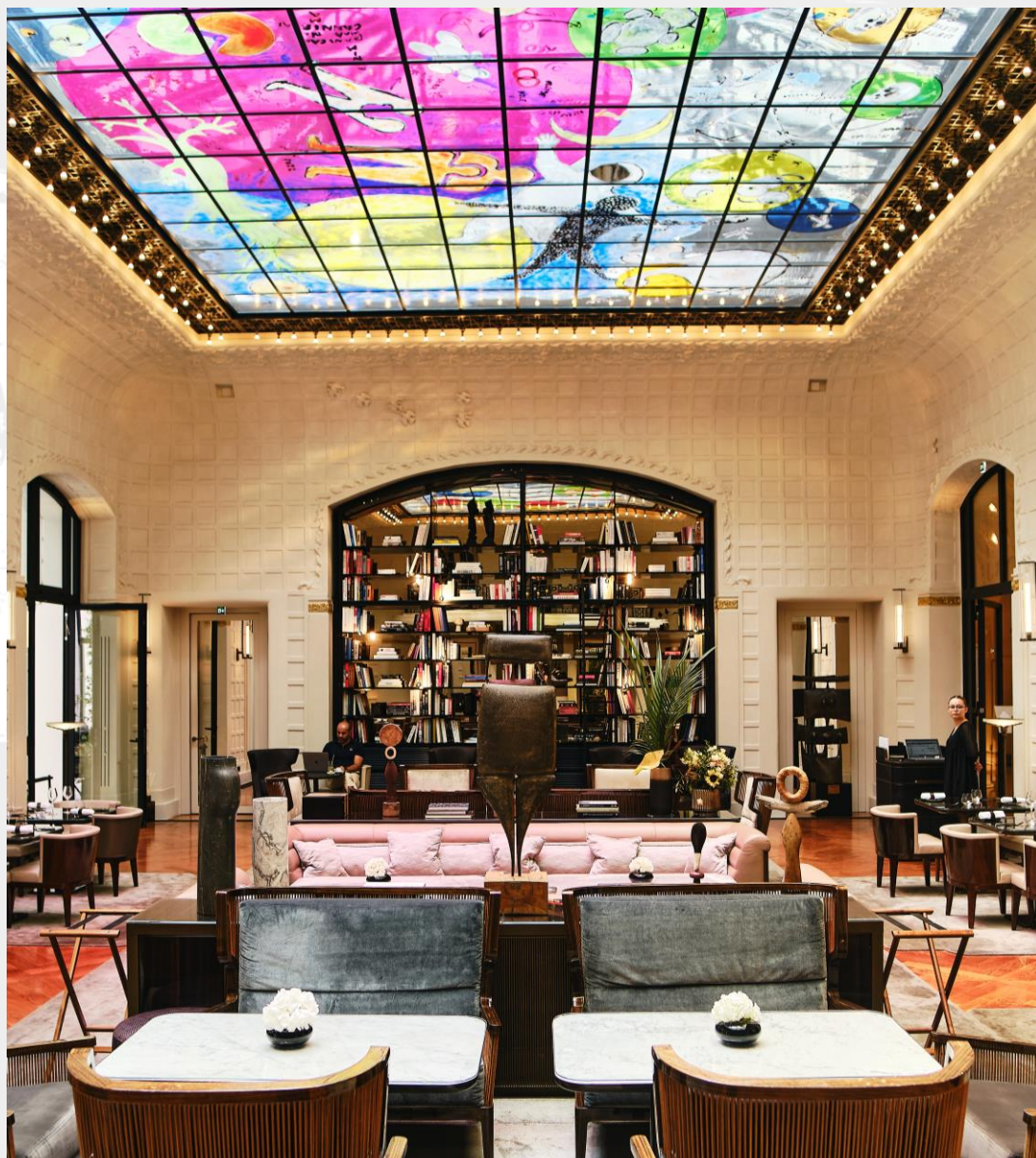
- Natural light with view of the corner of rue de Sèvres and boulevard Raspail
- Private access to the patio
- Modern design
- Cuisine combining French gastronomic classics and contemporary creations by Executive Chef Patrick Charvet



# OUR EVENT VENUES : CAPACITY CHART

	AREA (M2/FT2)	CEILING HEIGHT (M/FT)	NATURAL DAYLIGHT	COCKTAIL	BANQUET ING	THEATER	CLASSROOM	CABARET	U SHAPE	BOARDROOM
CRISTAL	310/3,337	5.45/17.88		260	180	180	84	84	60	52
L'ORANGERIE	152/1,636	4/13,12		160	80	-	-	48	-	30
SORBONNE	48/516	3.50/11.48		40	40	40	21	21	18	24
BEAUX-ARTS	50/538	3.50/11.48	-	40	40	40	21	21	18	24
SEVRES	44/471	2.30/7.54		-	-	-	-	-	-	20
BOUCICAUT	25/270	2.60/8.53		-	10	-	-	-	-	-
MEZZANINE	182/1956	2,6/8,53		80	54	-	-	-	-	-

# SAINT GERMAIN



# — BRASSERIE — LVTETIA



— BAR —  
JOSEPHINE



— BAR —  
ARISTIDE





# AKASHA

INSPIRING WELLBEING

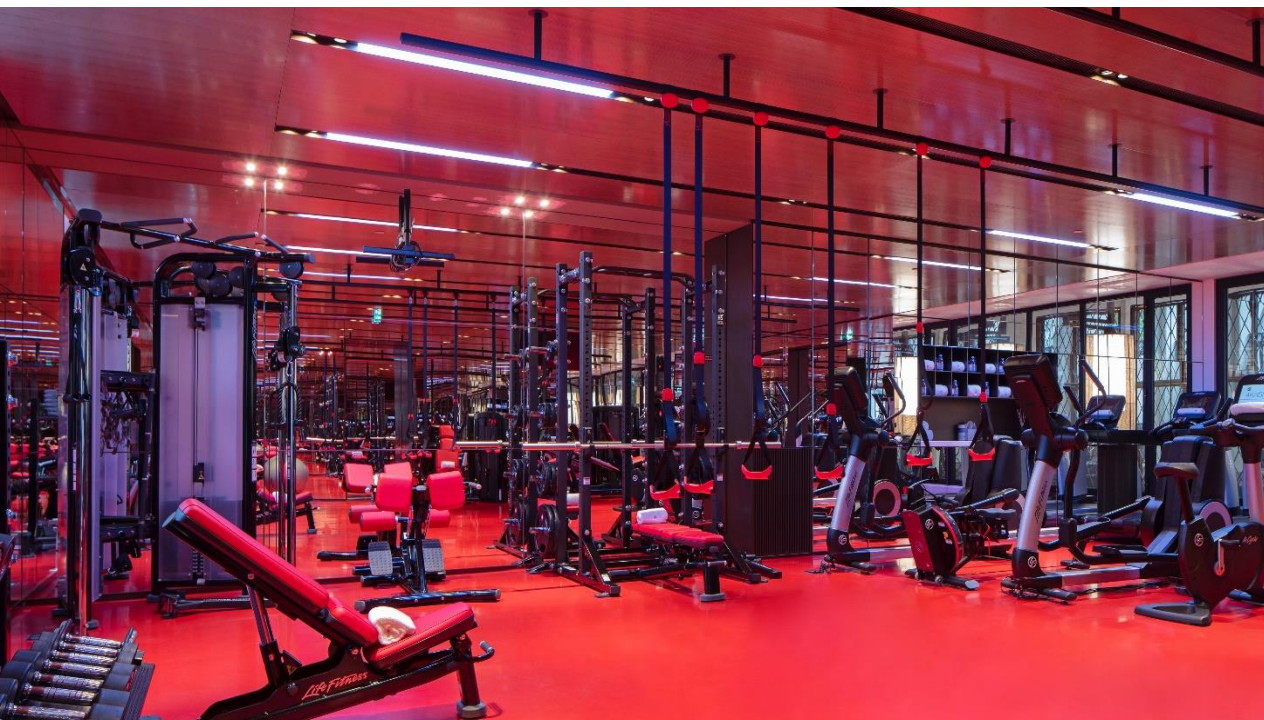
Akasha is a **700 sqm/7,500 sq ft** spa

**Six treatment rooms** will offer a huge array of the most sophisticated treatments and massages

**A sauna, steam room, plunge pool, infinity edge Jacuzzi and large fitness room** with state-of-the-art equipment are available

Bathed in natural light, a rarity in Paris, **the 17-metre-long swimming pool** completes the experience





# OUR ENGAGEMENTS

## Green Globe certified

The Lutetia Paris has achieved the Green Globe certification, one of the world's leading international sustainability accreditation Programs for the hotel industry.

## Water conservation

Flow reducers in guest room tabs and showers, time-programmed irrigation systems, rainwater cistern tank, dual flush and Eco-label chemicals.

## Energy efficiency

LED lighting, midnight light scenarios, green energy contracts, technologically advanced systems and operational awareness.

## Waste management

Responsible food sourcing, recycling including soap recycling and upcycling of used uniforms/bedding.



CARL SENELIER-NGHIEM  
ENTERTAINMENT & UK | SALES MANAGER  
45 BOULEVARD RASPAIL  
PARIS, 75006, FRANCE  
T: +33 1 49 54 46 00  
M: +33 7 44 74 58 72  
[CARL.SENELIER@HOTELLUTETIA.COM](mailto:CARL.SENELIER@HOTELLUTETIA.COM)  
[WWW.HOTELLUTETIA.COM](http://WWW.HOTELLUTETIA.COM)

WE HOPE TO SEE YOU IN SAINT GERMAIN !

LVTETIA  
PARIS