

SALTHILL HOTEL
PROMENADE GALWAY



CORPORATE VENUE

Connect. Collaborate. Celebrate.

The Promenade, Salthill, Co. Galway, H91 DD4V
Tel. 091-522711 | Email events@salthillhotel.com
www.salthillhotel.com



ABOUT SALTHILL HOTEL

The 4 Star Salthill Hotel Galway is situated on the spectacular Salthill Promenade with panoramic views of Galway Bay and the Clare Hills.

The hotel is just steps away from the beach and is one of the only hotels in Galway City with a leisure Centre and Gym. It is the perfect location for your event.

The Salthill Hotel offers luxury accommodation in Galway with our rooms offering a sophisticated contemporary décor.

We are located on the spectacular Salthill Promenade, just metres away from the beach which means that some of our rooms enjoy stunning sea views.

LUXURY ACCOMODATIONS

We have 161 bedrooms, comprising of signature Seaview rooms, double/twin rooms, triple and family rooms, all equipped with everything you will need for an enjoyable stay. Our team will ensure that you and your colleagues will have an experience to remember in one of Galway's finest 4-star Hotels.





Facilities

- 80 inch Projector Screen
- Video Projector
- Touch Control Lighting
- High-Speed Broadband
- In-House Surround Sound
- Microphones
- Onsite secure over and underground carparking
- Air Conditioning
- Private Bar

ROCKBARTON SUITE

The Rockbarton Suite is the largest multifunctional space on offer at the Salthill Hotel. It is 642sq metres in size and can be divided into 2 separate spaces. It can accommodate up to 700 delegates. With 8 eye-catching crystal chandeliers and all the latest audio-visual equipment, The Rockbarton Suite is the perfect venue for all event types, from larger conferences and corporate gatherings to gala dinners.



Facilities

- Portable Projector Screen
- Plasma Screen
- Video Projector
- DVD Player
- Custom-Designed Lectern
- Wired/Wireless Broadband
- Onsite Secure Over & Underground Parking
- Air Conditioning

PROMENADE SUITE

The Promenade Suite offers style and sophistication with elegant boardroom decor and unrivalled 4th floor panoramic views of Salthill Promenade and Galway Bay. This popular meeting room caters for up to 60 people and is the perfect setting for small and medium sized events. Filled with natural light, the Promenade Suite is a perfect hub for brainstorming and creativity.



Facilities

- Portable Projector & Screen
- Two 50-inch Plasma Screens
- Video Projector
- DVD player
- Custom-Designed Lectern
- Wired/Wireless Broadband
- Onsite Secure Over & Underground Parking
- Air-Conditioning

COURTYARD SUITE

This meeting room has a unique and spacious layout that invites natural light in with floor to ceiling windows that overlook our limestone courtyard. Located on the first floor the Courtyard Suite is in close proximity to our lobby and reception, providing for easy access. There is ample space with a portable projector, screen and two HD plasma screens at your disposal to ensure your meeting or event runs smoothly.



THE ORANGERY

Facilities

- Microphone and Speakers
- Tinted UV Glare proof glass
- Art Deco & Antique Furniture
- Polished concrete floor
- 4 Brass Chandeliers
- Tropical Plants throughout
- Wired/Wireless Broadband
- Onsite Secure Over & Underground Parking
- Air-Conditioning
- Underground heating

Our hotels newest and most exciting addition - The Orangery seamlessly offers the allure of the outdoors with comfort of indoors. This space is idyllic surrounding for private dining or as a drinks reception space.

The Orangery can also host business up to 60 delegates schoolhouse style and offers a unique venue for more casual business breakfasts or luncheons also.



Facilities

- 80-inch Projector Screen
- Video Projector
- Touch Control Lighting
- Broadband
- In-House Surround Sound
- Microphones
- Onsite Secure Over & Underground Carparking
- Air Conditioning
- Private Bar

ARAN SUITE

For medium – Large Size events, the Aran Suite is the ideal space. This conference space is 280sq metres and can cater for up to 250 delegates. It combines sophistication with flexibility and is the perfect space for corporate gatherings, team building events and is a popular choice for private dinner and drinks receptions.



OCEAN FITNESS

Whether you're a world class athlete or an exercise novice, you can swim in our sunlit 25m pool, workout in our gyms, relax in our warm 18m hydrotherapy pool, soak in our whirlpool, or de-stress in our sauna and steam rooms. After a visit to Ocean Fitness in the Salthill Hotel you can be sure that your body will feel rejuvenated and revitalized.

With spacious changing facilities featuring underfloor heating, Ocean Fitness has everything you need to make the most of your leisure time!

Our unique aquatic area boasts two independent swimming pools - a 25m pool for lane training and an 18m hydrotherapy pool for leisure swimming. Our sunlit competition standard 25m main pool is ideal for endurance training, swimming lengths, or even triathlon training.



Separately, our 18m hydrotherapy pool is more suited to enjoying a restorative relaxed swim session or simply allowing the warm therapeutic water and jets to relax your body and mind.

Facilities

- 6 lane 25 metre Swimming Pool
- 18 metre Hydrotherapy Pool
- State of Art Gym & Fitness Suite
- Sauna
- Steam Room
- Weights Training Area



OCEAN
FITNESS

CAPACITIES & LAYOUTS



ROCKBARTON BALLROOM

THE ARAN SUITE

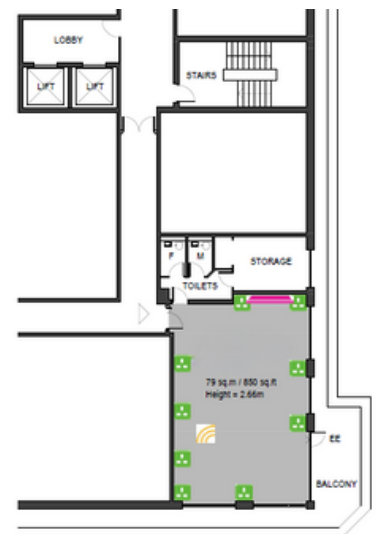
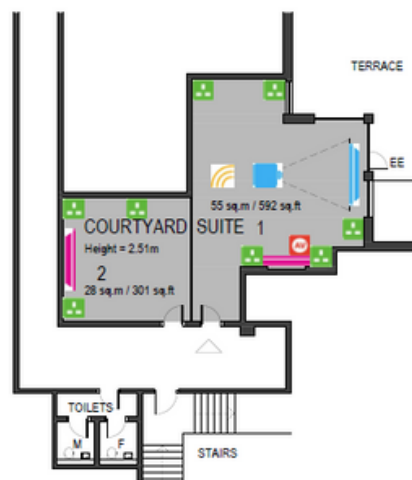
PANORAMIC SUITE

Room	U Shape	Theatre	Classroom	Boardroom	Banquet	Reception	Cabaret	Length x Width (m)	Ceiling Height (m)	Floor Space (sqm)
Rockbarton Suite	40	600	300	40	450	600	272	27x17	428	520
Aran Suite	40	150	80	40	150	200	88	19.5x14.3	3.36	292
Courtyard Suite	16	70	32	16	-	50	32	11x7	2.51	83
Promenade Suite	30	70	40	20	-	50	40	10x6	2.66	79
Piano Suite	30	150	72	30	100	150	80	13x14	3.07	210

ARAN SUITE

COURTYARD SUITE

PANORAMIC SUITE



Power Point
AV Socket
AV Equipment
Screen
Plasma Screen
WiFi Enabled
Ceiling Projector